



Quick Start Set Up Guide

Wallach ZoomScope™ Colposcope with Built-in Digital USB Camera

REF 906043-40TU, 906043-70TU, 906057-40TU, 906170

Thank you for purchasing the Wallach Surgical Devices Colposcope or Optics Conversion Kit with a built-in Digital USB Camera. Included with your purchase is a CD containing the [Sentech Image Viewing Software](#). This software is provided "as is". The software has a broad range of features and capabilities. Its sole purpose is to create Colposcopy digital images in either a .bmp, .jpg, .tiff or .png format.

To facilitate the use of this software, Wallach Surgical Devices has written this Quick Start Set Up Guide. The included CD has a full manual from the manufacturer.

Notice

This software has been provided to you free of charge. This software has been confirmed to be accurate for digital images within the context of Colposcopy. However, no other features are supported. The user assumes all responsibility for proper set up.

If you would prefer a fully supported software product, which also provides a Patient Management System, please consider purchasing the Wallach Surgical Devices Total Recall™ software.

Wallach Surgical Devices
95 Corporate Drive
Trumbull, CT 06611 USA
Phone: 203-799-2000
Fax: 203-799-2002
www.wallachsurgical.com

Quick Start Set Up Guide

Follow these steps to set up the camera.

1. Disk Placement & Installation

Place the CD into the PC and begin the automatic installation of the software. During installation, you should see the addition of the software icon (StCamSWare) on the "Desktop" as shown below.



3. Camera Settings

Using the cursor, select "Options", then "Settings"; which will bring up a drop-down menu and the following image.

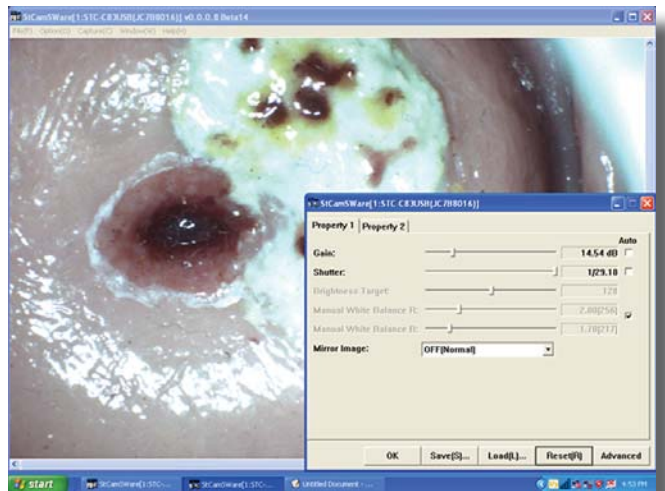


2. Open StCamSWare software

Double click on the "StCamSWare" icon. Your screen (in clinical use) should look similar to this.

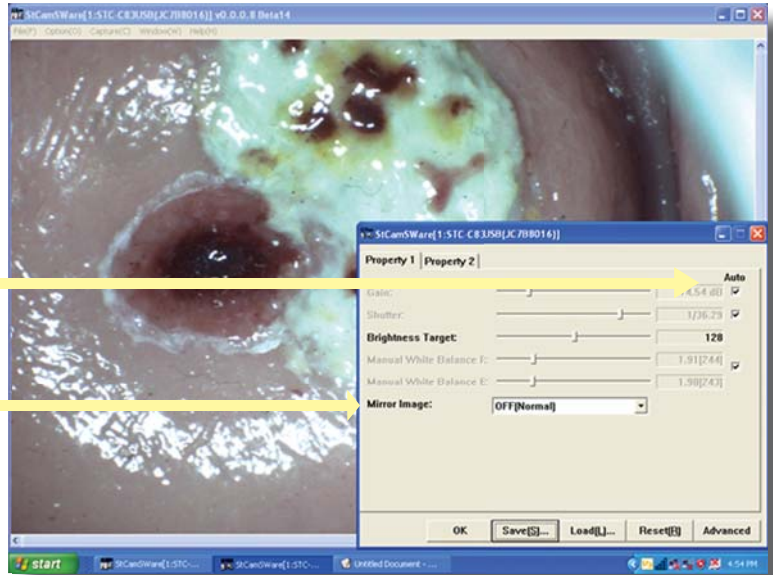


4. A window will appear in the bottom right.

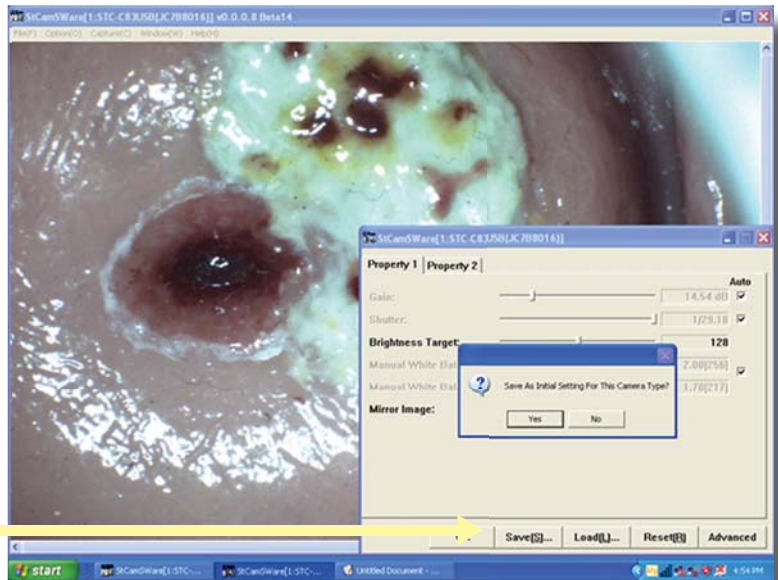


5. Check the boxes under **"Auto"** that are next to the "Gain" and "Shutter" features.

Next to "Mirror Image," click on arrow of drop-down box and select "Horizontal/Vertical."



6. Click on the "Save" button, then choose "Yes". Close this window. The camera is now set up.



Follow these steps to take a picture.

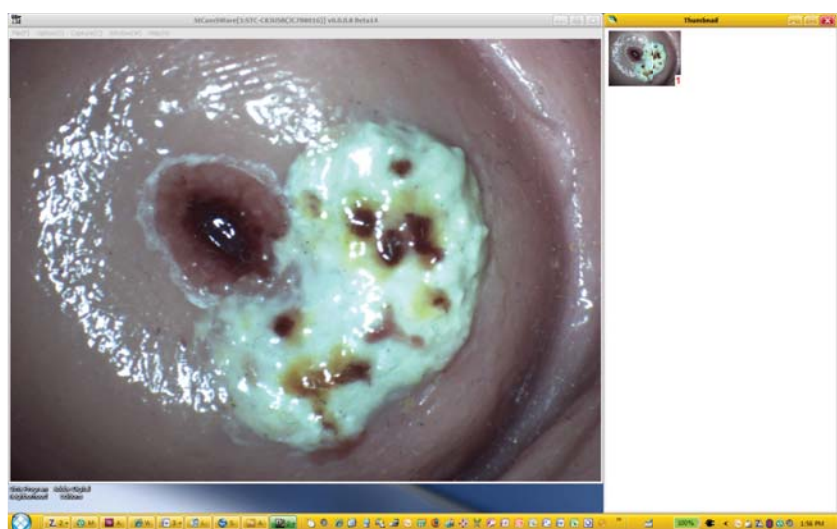
1. From the start, your image will look something like this. Focus to get the desired image on the screen.



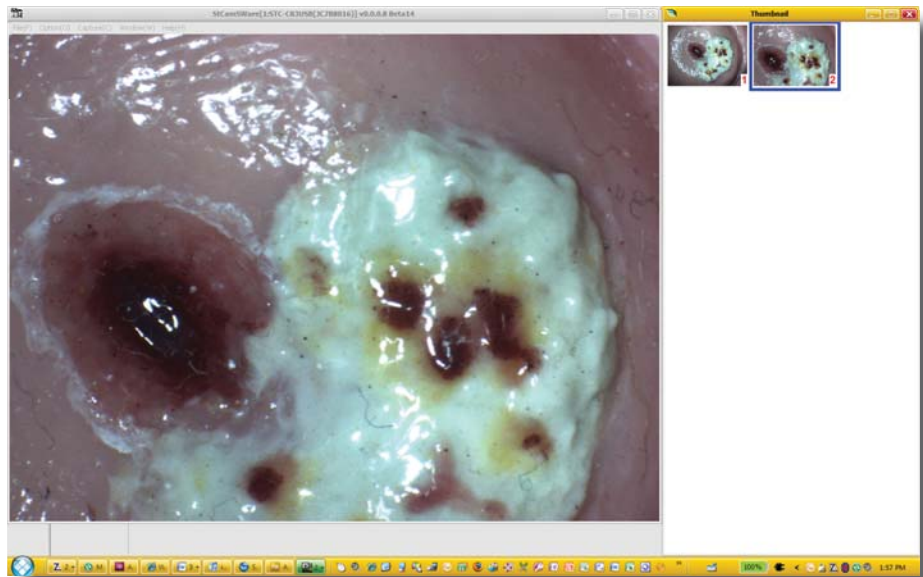
2. To capture the image on the screen, choose "Capture" and then "Snap Shot".



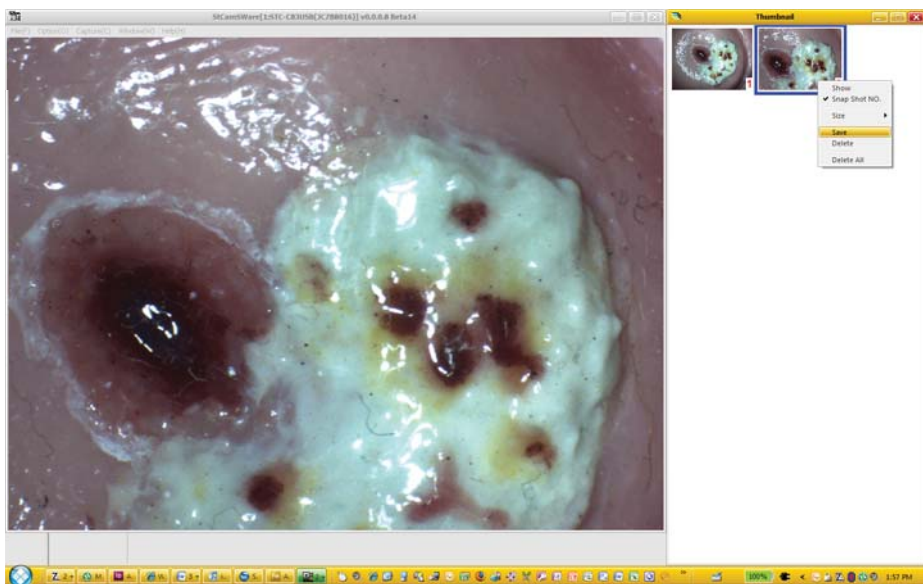
3. A window will open to the right of the main image, as shown.



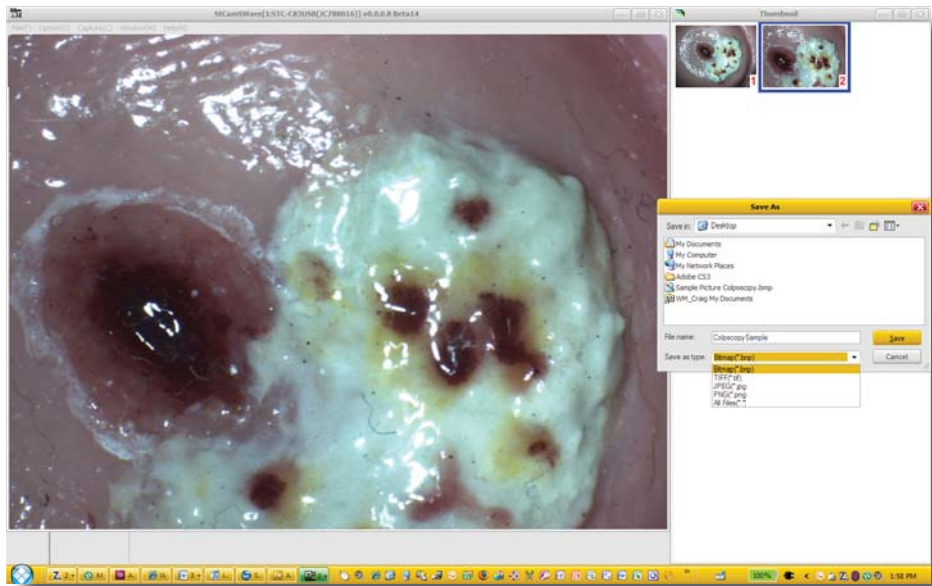
4. To save the image, click it to “select” the image with your left mouse button. This will cause a blue border to appear around the image of interest.



5. With the cursor over the image, click using the right mouse button and a menu will appear. Select “Save”.



6. Save the image in one of 4 formats (*Bitmap*, *TIFF*, *JPEG* or *PNG*). Complete the information as you would for any software program and save to a location of your choice.



(This page left blank intentionally.)