

droplet[®]
pen needles

STERILE, SINGLE-USE PEN NEEDLES

Intended for use with pen injector devices
for the subcutaneous injection of drugs



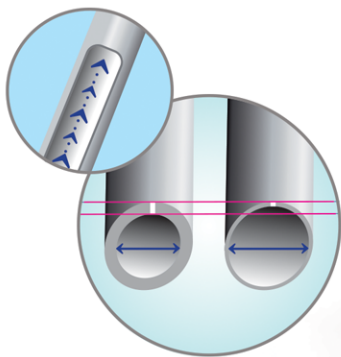
Product intended use

Sterile, single-use pen needles intended for use with pen injector devices for the subcutaneous injection of drugs.

Product features

Smart

Thin wall with bigger inner diameter provides fast and adequate insulin flow.¹



Soft

Precise 3-bevel grinding designed for smooth and gentle injection.²



Unique „in-house” lubrication method DROPLICON™ for smooth and gentle injection.³



Simple

Easy adjustment of pen needle on pen injector.³

Our pen needles proactively address:³

- easy adjustment
- greater convenience
- quick and comfortable use

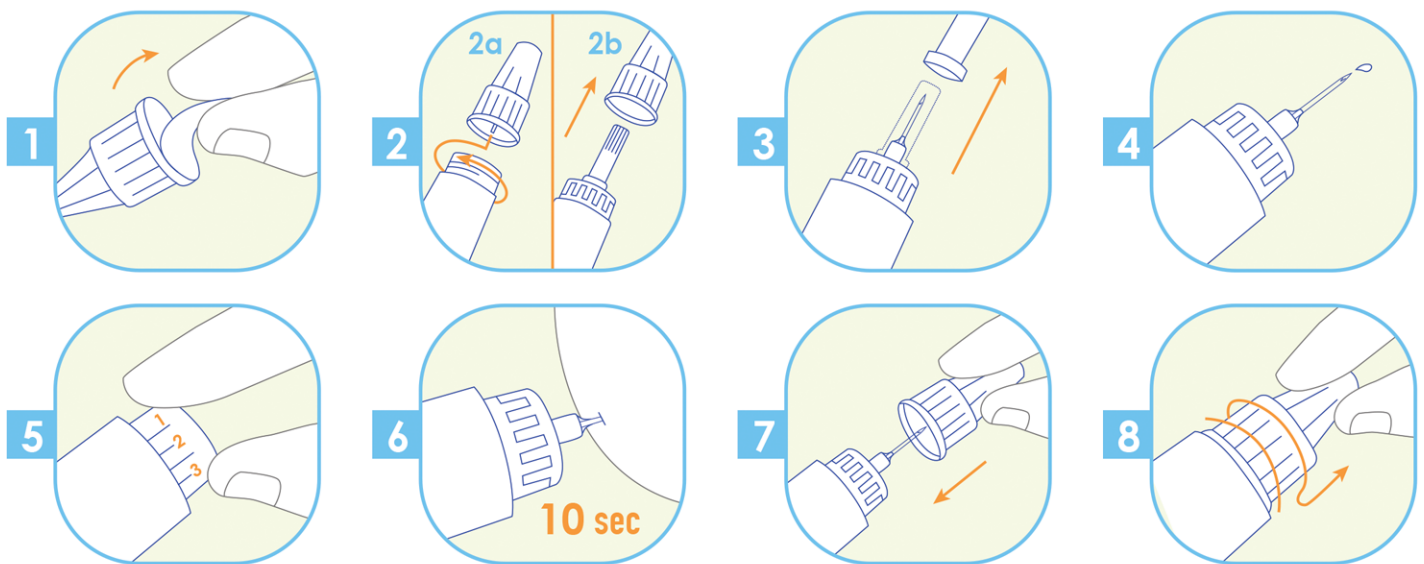
Diabetes facts

Diabetes is a disease in which the body is unable to properly use and store glucose. Glucose backs up in the bloodstream — causing one's blood glucose (sometimes referred to as blood sugar) to rise too high.

Diabetes can cause serious health complications including heart disease, blindness, kidney failure, and lower-extremity amputations.

For many diabetics, injections are just a part of life – they require multiple injections per day.

How to use droplet® pen needles:



Patients should remember to rotate injection sites, according to applicable insulin delivery recommendations.⁴

Droplet® pen needles are sterile and for single use only. Sterility is guaranteed if the needle seal is unbroken.

Remember! Droplet® pen needles should be used only once and disposed of in a sharps container.

Re-usage can:

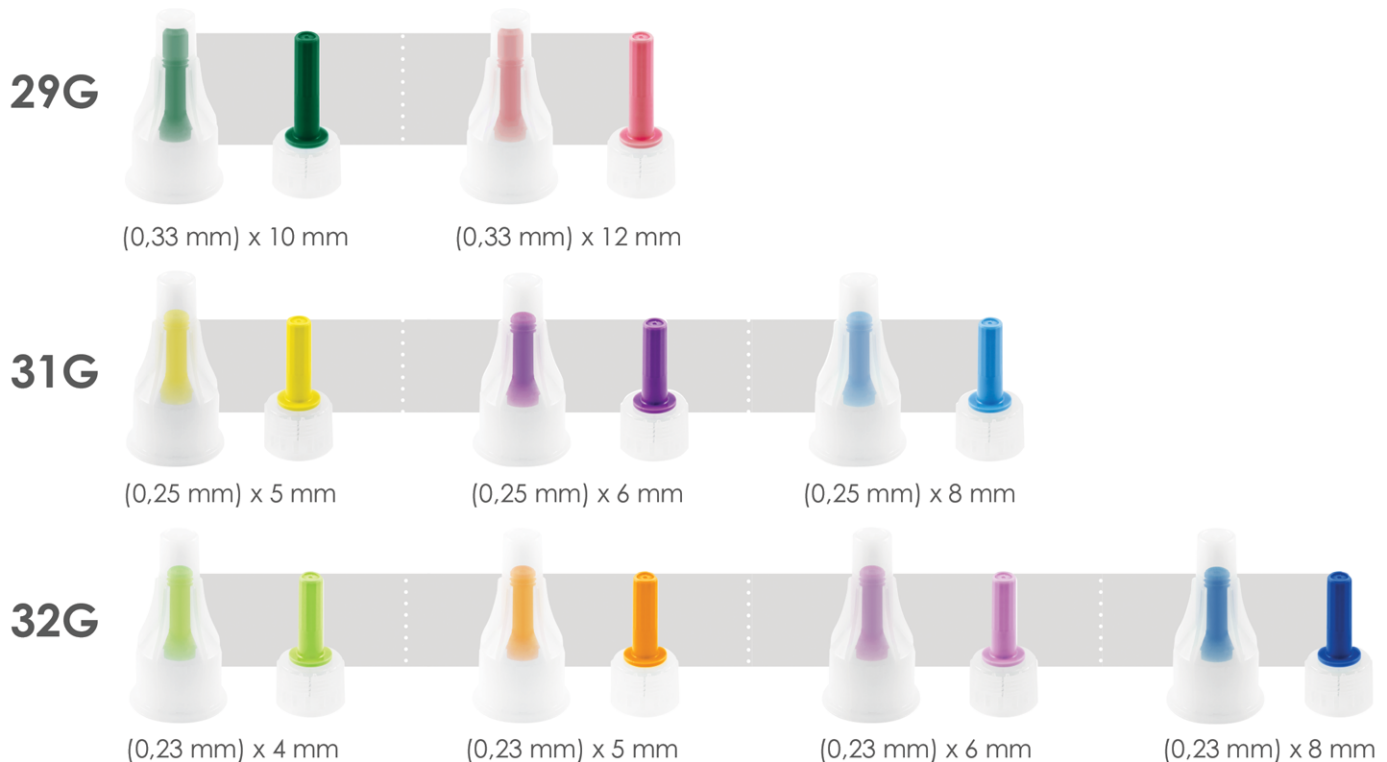
- lead to needle breakage⁵
- cause lipohypertrophy⁴
- dull or bend the tip, causing bleeding, bruising, or scarring^{4,6}
- increase the risk of the needle breaking off in the skin⁵
- increase the risk of infection because the needle is no longer sterile⁶

droplet[®]

pen needles

Sterile, single-use pen needles intended for use with pen injector devices for the subcutaneous injection of drugs.

Available in nine versions:



Droplet[®] **pen needles** are compatible with most insulin pens available on the market, for more information visit: <http://htl-strefa.com/products/pen-needles/droplet/>

References:

1. HTL-STREFA S.A. Data on file. Comparative study – TUV Rheinland, 2015.
2. Præstmark KA, Jensen ML, Madsen NB, et al. Pen needle design influences ease of insertion, pain, and skin trauma in subjects with type 2 diabetes. *BMJ Open Diabetes Research and Care* 2016;4:e000266. doi:10.1136/bmjdr-2016-000266.
3. HTL-STREFA S.A. Data on file. HTL insulin pen needles- concept & product test in five European countries, PMR Consulting & Research, 2014-2018.
4. Frid AH, Kreugel G, Grossi G, et al. New insulin delivery recommendations. *Mayo Clin Proc.* 2016; 91 (9):1231-1255.
5. Available on: www.Diabetes.co.uk, Reusing Insulin Pen Needles. www.diabetes.co.uk/insulin/reusing-insulin-pen-needles.html [printed on 2019-04-12].
6. American Diabetes Association. Insulin Administration. *Diab Care*, Jan 2004; 27, Suppl.1.

Poland



HTL-STREFA S.A.
ul. Adamówek 7
95-035 Ozorków
info@htl-strefa.pl
www.htl-strefa.com



Find us on Facebook
www.facebook.com/HTLSTREFA

USA

HTL-STREFA, Inc.
3005 Chastain Meadows Pkwy
Suite 300
Marietta, GA 30066

+1 770 528 0410
info@htl-strefa.com
www.htl-strefa.com



810/ALL/10/2019
Made in Poland

CE 0344

CE mark refers to the product
not to the brochure