

Bioteque

America Inc

The word "Bioteque" is written in a dark blue serif font. The letter "e" at the end of the word is stylized to incorporate a stethoscope. The top curve of the "e" forms the top of the stethoscope's chest piece, and the bottom curve forms the bottom of the chest piece. The two vertical lines of the stethoscope extend upwards from the top curve and downwards from the bottom curve, meeting at the top and bottom of the "e".

TABLE OF CONTENTS

Pessaries	4-7
Fitting Sets	8-9
Endometrial Samplers	10
Vaginal/Cervical Dilators	11
Bioteque Catheters	12
Bioteque Aspiration Sets	13
Loop Electrode & Accessories	14
Biopsy Punches	15
Forceps	16
Stainless Steel Speculum	17-18
Lletz Speculum & Instruments	19
Curettes	20
Dilators	21
Cytology Brushes, Pessary Removers, & P.O.P.s Ruler	22
Ordering and Returns	23

SILICONE PESSARIES



Ring

The Ring pessary, available with or without a supporting membrane, is primarily used for mild first-degree uterine prolapse and cystocele.

SKU (W/O support)	R#0	R#1	R#2	R#3	R#4	R#5	R#6	R#7	R#8	R#9
Dimensions	1.75"	2.00"	2.25"	2.50"	2.75"	3.00"	3.25"	3.50"	3.75"	4.00"
SKU (with support)	Rs#0	Rs#1	Rs#2	Rs#3	Rs#4	Rs#5	Rs#6	Rs#7	Rs#8	Rs#9



Ring with Knob

The Ring with Knob pessary, available with or without a supporting membrane, is primarily used for mild first-degree uterine prolapses, cystocele, and stress urinary incontinence.

SKU (W/O support)	RK#0	RK#1	RK#2	RK#3	RK#4	RK#5	RK#6	RK#7
Dimensions	1.75"	2.00"	2.25"	2.50"	2.75"	3.00"	3.25"	3.50"
SKU (with support)	RKs#0	RKs#1	RKs#2	RKs#3	RKs#4	RKs#5	RKs#6	RKs#7



Incontinence Ring

The Incontinence Ring is primarily used for stress urinary incontinence, mild first-degree uterine prolapse, and cystocele.

SKU	IR0	IR1	IR2	IR3	IR4	IR5	IR6	IR7	IR8	IR9
Dimensions	1.75"	2"	2.25"	2.5"	2.75"	3"	3.25"	3.5"	3.75"	4"



Oval

The Oval pessary, available with or without a supporting membrane, is primarily used for mild first-degree uterine prolapse and cystocele. The pessary's shape helps to limit rotation.

*Bioteque Exclusive

SKU (W/O support)	OV#1	OV#2	OV#3	OV#4	OV#5	OV#6	OV#7	OV#8	OV#9
Dimensions	2.00"	2.25"	2.50"	2.75"	3.00"	3.25"	3.50"	3.75"	4.00"
SKU (with support)	OVs#1	OVs#2	OVs#3	OVs#4	OVs#5	OVs#6	OVs#7	OVs#8	OVs#9



*Bioteque Exclusive

Marland

The Marland pessary, available with or without a supporting membrane, is primarily used for second or third-degree uterine prolapse, cystocele, rectocele. The pessary's elevated platform may also relieve stress urinary incontinence.

SKU (W/O support)	M#2	M#3	M#4	M#5	M#6	M#7	M#8
Dimensions	2.25"	2.50"	2.75"	3.00"	3.25"	3.50"	3.75"
SKU (with support)	Ms#2	Ms#3	Ms#4	Ms#5	Ms#6	Ms#7	Ms#8



Gehrung

The malleable Gehrung pessary with a supporting membrane is primarily used for significant cystocele or rectocele, and second or third-degree uterine prolapse. The pessary can be manually shaped to accommodate individual anatomies. Use caution and follow doctor's instructions before undergoing MRI.

SKU	GH#0	GH#1	GH#2	GH#3	GH#4	GH#5	GH#6	GH#7	GH#8	GH#9
Dimensions	50mm	55mm	60mm	65mm	70mm	75mm	80mm	85mm	90mm	95mm



Shaatz

The Shaatz pessary is primarily used for cystocele, and second or third-degree uterine prolapse. Its convex shape ensures a snug fit drainage holes aid in removal.

SKU	SH#0	SH#1	SH#2	SH#3	SH#4	SH#5	SH#6	SH#7	SH#8
Dimensions	1.50"	1.75"	2.00"	2.25"	2.50"	2.75"	3.00"	3.25"	3.50"



Donut

The Donut pessary is primarily used for second or third-degree uterine prolapse, cystocele, and rectocele. This pessary, often used by post-menopausal women, is easily compressed for insertion and removal.

SKU	D#0	D#1	D#2	D#3	D#4	D#5	D#6	D#7
Dimensions	2.00"	2.25"	2.50"	2.75"	3.00"	3.25"	3.50"	3.75"



FlexiShelf

The FlexiShelf pessary is primarily used for second or third-degree uterine prolapse. It has a unique thin curved-base design, rigid inner layer and soft outer layer. The curved cone-shaped handle aids in removal.
*Biotque Exclusive

SKU	FS06	FS08	FS10	FS12
Dimensions	57mm	64mm	70mm	76mm



Cube

The Cube pessary, available with or without drains, is primarily used for cystocele, rectocele, second or third-degree uterine prolapse, and complete procidentia.

SKU (W/O support)	CU#0	CU#1	CU#2	CU#3	CU#4	CU#5	CU#6	CU#7	CU#8	CU#9	CU#10
Dimensions	25mm	29mm	33mm	37mm	41mm	45mm	50mm	56mm	63mm	70mm	75mm
SKU (with support)	CUd#0	CUd#1	CUd#2	CUd#3	CUd#4	CUd#5	CUd#6	CUd#7	CUd#8	CUd#9	CUd#10



Gellhorn

The Gellhorn pessary with drains is primarily used for cystocele, rectocele, and second or third-degree uterine prolapse. This pessary's stem with knob is easily folded to aid with insertion and removal.

SKU (with drains)	Gd#0	Gd#1	Gd#2	Gd#3	Gd#4	Gd#5	Gd#6	Gd#7	Gd#8	Gd#9
Dimensions	1.50"	1.75"	2.00"	2.25"	2.50"	2.75"	3.00"	3.25"	3.50"	3.75"



Short Stem Gellhorn

The short-stem Gellhorn pessary with drains is primarily used for cystocele, rectocele, and second or third-degree uterine prolapse. It provides a better fit for some women.

SKU (with drains)	GS#0	GS#1	GS#2	GS#3	GS#4	GS#5	GS#6	GS#7	GS#8	GS#9
Dimensions	1.50"	1.75"	2.00"	2.25"	2.50"	2.75"	3.00"	3.25"	3.50"	3.75"



Dish

The Dish pessary, available with or without a supporting membrane, is primarily used for second or third-degree uterine prolapse, cystocele, rectocele and stress urinary incontinence.

SKU (W/O support)	DSH#0	DSH#1	DSH#2	DSH#3	DSH#4	DSH#5	DSH#6	DSH#7
Dimensions	50mm	55mm	60mm	65mm	70mm	75mm	80mm	85mm
SKU (with support)	DSHs#0	DSHs#1	DSHs#2	DSHs#3	DSHs#4	DSHs#5	DSHs#6	DSHs#7



Cup

The Cup pessary, available with or without a supporting membrane, is primarily used for first or mild second-degree uterine prolapse. This pessary is similar to the dish without a knob.

SKU (W/O support)	CP#0	CP#1	CP#2	CP#3	CP#4	CP#5	CP#6	CP#7
Dimensions	50/18 mm	55/23 mm	60/28 mm	65/33 mm	70/38 mm	75/43 mm	80/48 mm	85/52 mm
SKU (with support)	CPs#0	CPs#1	CPs#2	CPs#3	CPs#4	CPs#5	CPs#6	CPs#7



Hodge

The malleable Hodge pessary, available with or without a supporting membrane, is primarily used for first or mild second-degree prolapse and cystocele. This pessary, designed to be manually shaped for individual fitting, is usually prescribed for reproductive-aged women who prefer conservative therapy. Use caution and follow doctor's instruction before undergoing MRI

SKU (W/O support)	HD#0	HD#1	HD#2	HD#3	HD#4	HD#5	HD#6	HD#7	HD#8	HD#9
Dimensions	65mm	70mm	75mm	80mm	85mm	90mm	95mm	100mm	105mm	110mm
SKU (with support)	HDs#0	HDs#1	HDs#2	HDs#3	HDs#4	HDs#5	HDs#6	HDs#7	HDs#8	HDs#9



*Bioteque Exclusive

Silicone Inflatable Donut

The Inflatable Donut is primarily used for mild second or third degree cystocele or rectocele in combination with procidentia/prolapse.

SKU	Dimensions
ID 2	2.00"
ID 3	2.25"
ID 4	2.50"
ID 5	2.75"

FITTING SETS



Ring Type Fitting
Set SKU: FS1000

Pessary Fitting Set

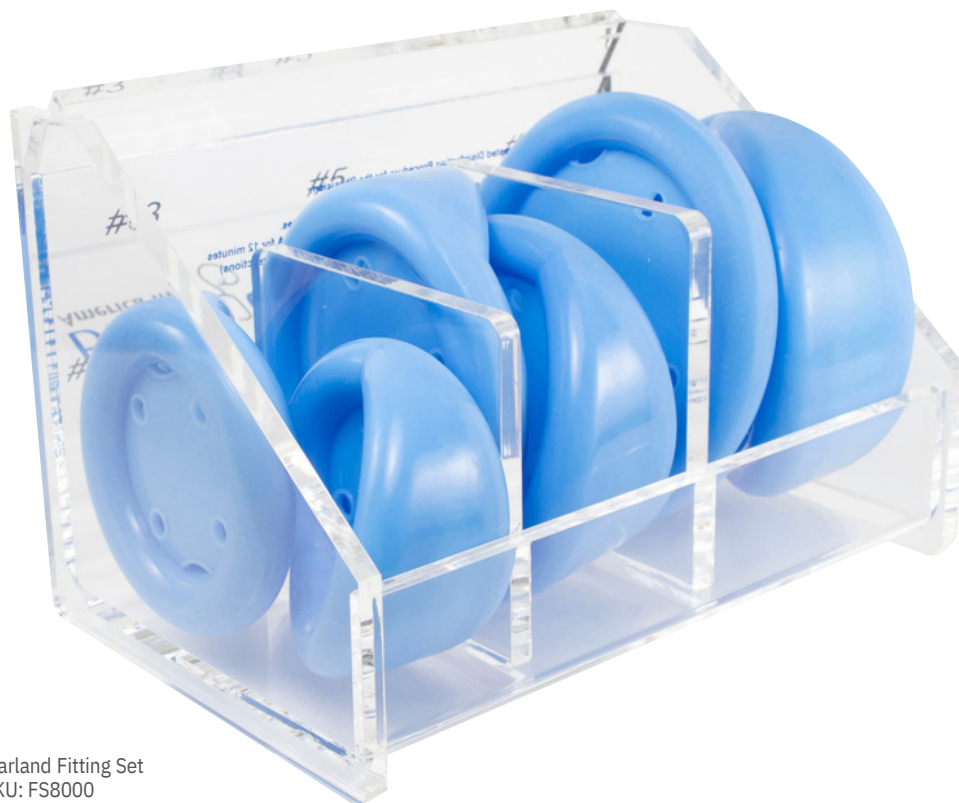
The Pessary Fitting Set is designed for the physician to determine the proper size and type of pessary for the patient before prescription. 100% Silicon blue in color for identification, Available in 11 types; each set includes 6 sizes, Autoclavable and can be reesterilized up to 100 times.

SKU	Type	Size
FS1000	Ring	Size 2-7
FS2000	Cube	Size 2-7
FS3000	Dish	Size 2-7
FS4000	Oval	Size 2-7
FS5000	Gellhorn	Size 2-7

SKU	Type	Size
FS6000	Ring w/ Support	Size 2-7
FS7000	Ring w/ Knob	Size 2-7
FS8000	Marland	Size 2-7
FS9000	Cup	Size 2-7
FS1100	FlexiShelf	Size 6-12



FlexiShelf Fitting
Set SKU: FS1100



Marland Fitting Set
SKU: FS8000

BIOTEQUE ENDOMETRIAL SAMPLERS



Preferred Curette

The Preferred Curette and the SureFlex are used to obtain samples of mucosal lining for histological study in cancer screening, endometrial dating, or bacterial culturing.

M0014	Preferred Curette	3.0mm	25 units/box
M0015	SureFlex Preferred Curette	3.0mm	25 units/box
M0016	EZ Preferred Curette	3.6mm	25 units/box



Ensula™ Curette

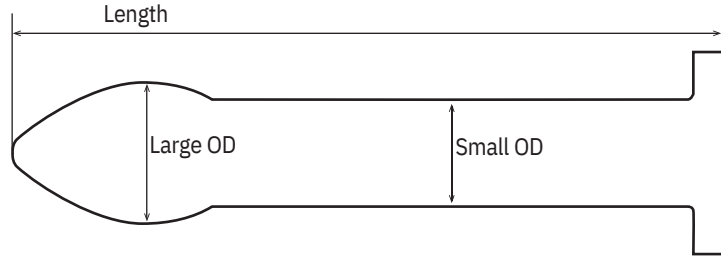
This 3.0mm suction Curette with a Randall-type cutting edge is packaged with a twist-and-lock syringe. It is used to obtain uterine samples of endometrial tissue for histological study.

RD003	Curette	25 units/box
-------	---------	--------------

BIOTEQUE DILATORS



Silicone Vaginal Dilator Sets



Each set includes 4 graduated sizes of dilators used to enlarge the vaginal for examination, surgical procedures, or relief of vaginismus. Single patient use only.

Large Set

Family	Length	OD Small	OD Large
DT-A/XL	150.0	30.0	38.0
DT-A/L	138.0	25.5	32.0
DT-A/M	128.0	22.5	28.0
DT-A/S	120.0	19.5	24.0

Medium Set

Family	Length	OD Small	OD Large
DT-B/XL	95.0	26.0	33.0
DT-B/L	86.0	22.5	28.0
DT-B/M	78.0	19.5	23.0
DT-B/S	75.0	12.5	17.0

Small Set

Family	Length	OD Small	OD Large
DT-C/XL	75.0	13.5	18.0
DT-C/L	65.0	12.0	16.0
DT-C/M	60.0	10.5	14.0
DT-C/S	50.0	9.5	13.0

The Nichols Counsellor

Family	Length	OD Small	OD Large
C133L	133.75	15.75	41.70
C125M	125.50	14.75	33.50
C116S	116.75	13.75	30.75

Bioteque Vaginal Dilator: CPT Code: 99070 Procedure Code: 57400

OS Finder Sets 25/Box



Bioteque offers reusable (white) and disposable (blue) OS Finder sets. Both sets include an OS Finders, Canal Locator, and a Fundus Dilator. The disposable OS Finders can be ordered separately. These sets are useful in locating and dilating the external and internal OS as well as the cervical canal.

SKU	Description	Length	Taper	
OS260BA	Reusable Complete Set			
OS265BA-1	Disposable OS Finder	215mm	23mm	Ø 1.75 - 3.8mm
OS265BA-2	Disposable Canal Locator	215mm	45mm	Ø 1.75 - 3.8mm
OS265BA-3	Disposable Fundus Dilator	215mm	85mm	Ø 1.75 - 3.8mm



Uterine Sound 25/Box

Bioteque's latex-free Uterine Sounds are malleable, and disposable. Used for dilating and measuring the cervix. Graduated in centimeters with markings at 3cm, 5cm, 7cm, 9cm, and 11cm.

SKU	Description	Length	OD
BA100	Disposable Uterine Sound	245mm	3mm



Word Bartholin Catheter Set 6/pack

This latex-free Bartholin Catheter Set contains a silicone inflatable catheter, scalpel, syringe, and needle, for the treatment of Bartholin gland abscesses.

SKU: WC-400MM

CPT Code: 56420 HCPT Code: A4550



Uterine Manipulator Injector 12/Box

Ideally designed for Laparoscopic Tubal Occlusion, Diagnostic Laparoscopy, Minilaparotomy, Salpingoplasty, and Fertility Exams.

1. Pear shaped balloon for optimum hold and better seal at the internal OS
2. Easy insertion by reducing the size of cannula
3. Flexible sleeve keeps luer from cracking
4. No need for another instrument during the procedure

SKU: UMI 4.5/ UMI 4.5K



Uterine Injector 12/Box

1. Sterile, disposable, ready to use
2. Curved Shaft (uterine sound shaped) for use in anteverted or retroverted uteri
3. Snap-on cervical stop custom set for every patient
4. Snap-on cervical stop V-shaped design for easy view of external cervical OS
5. Patient ambulatory once instrument properly inserted
6. Durable no-crack luer fitting on flexible collar for convenient injection
7. No spring or weights added

SKU: UMI 2.0/ UMI 4.0



HSG Stylet 10/Box

SKU: BA001



HSG Catheter Sets Latex Free w/ balloon

Bioteque's latex-free HSG Catheter Sets, available in 5F & 7F with a silicone balloon, are useful in evaluating the causes of abnormal bleeding, menstrual disorders, recurrent miscarriage, and unexplained infertility.

SKU	Description	
BA05F	5 French Catheters	10 units/ box
BA07F	7 French Catheters	10 units/ box
BA051F	5 French SureFlex Catheters	10 units/ box
BA071F	7 French SureFlex Catheters	10 units/ box



Bellota™ Sonohysterography Catheter

The balloonless Sono Catheter is a sterile disposable 5F catheter that consists of an insertion sheath and cervical cone. The adjustable cervical cone positioner helps with catheter placement while reducing leakage of saline at the external cervical OS.

SKU	Description	
UIC5	SonoCatheter w/o cervical cone 5Fr	25/box
UIC5FA	SonoCatheter w/ cervical cone 5Fr	25/box
UIC5FAX	SonoCatheter w/ cervical cone 5Fr	25/box

CPT Code: 76831

BIOTEQUE ASPIRATION SETS

Karman Curette

Karman curette (or cannula) is a flexible plastic curette incorporates with vacuum aspiration syringes to provide a safe, efficient and fast vacuum aspiration method to evacuate the contents of the uterus.

SKU	Description
BAFS6	Karmen Curette 6mm
BAFS7	Karmen Curette 7mm
BAFS8	Karmen Curette 8mm
BAFS9	Karmen Curette 9mm
BAFS10	Karmen Curette 10mm
BAFS11	Karmen Curette 11mm
BAFS12	Karmen Curette 12mm

Suction Curette

The Suction Curette is used for uterine evacuation and curettage in voluntary pregnancy termination or following miscarriage.

SKU	Description
BARS6	Suction Curette Ridge Straight 6mm
BARS7	Suction Curette Ridge Straight 7mm
BARS8	Suction Curette Ridge Straight 8mm
BARS9	Suction Curette Ridge Straight 9mm
BARS10	Suction Curette Ridge Straight 10mm
BARS11	Suction Curette Ridge Straight 11mm
BARS12	Suction Curette Ridge Straight 12mm

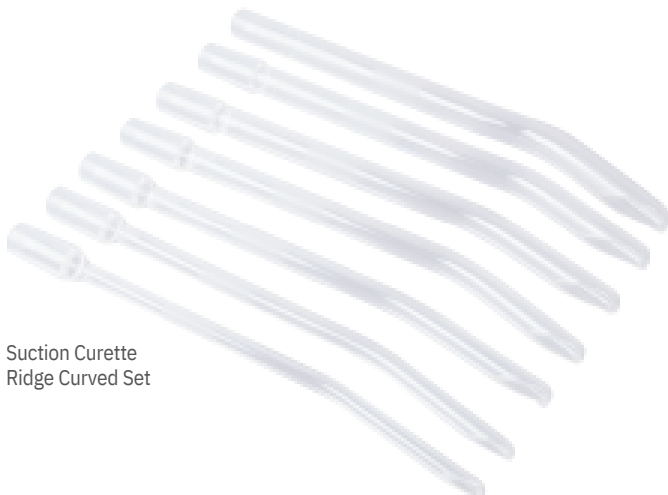
SKU	Description
BARC6	Suction Curette Ridge Curved 6mm
BARC7	Suction Curette Ridge Curved 7mm
BARC8	Suction Curette Ridge Curved 8mm
BARC9	Suction Curette Ridge Curved 9mm
BARC10	Suction Curette Ridge Curved 10mm
BARC11	Suction Curette Ridge Curved 11mm
BARC12	Suction Curette Ridge Curved 12mm



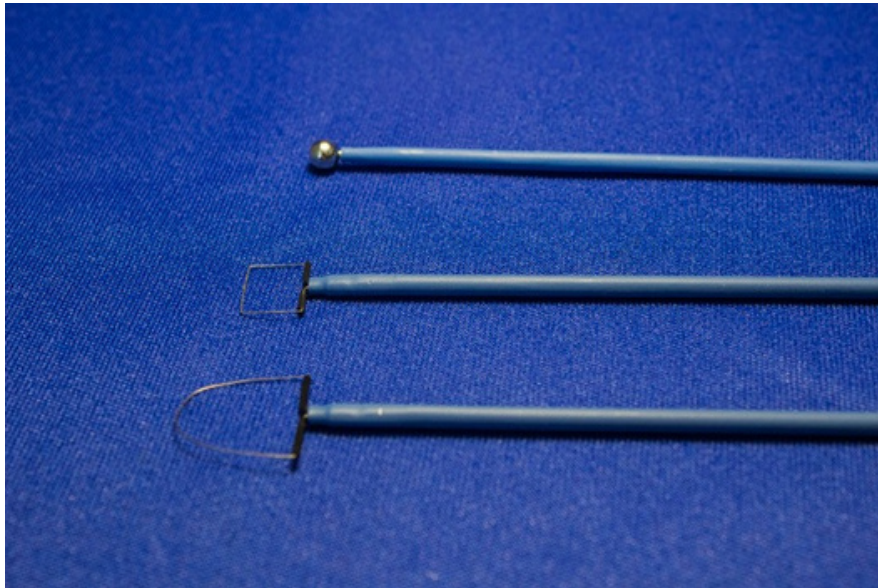
Karman Curette Set



Suction Curette Ridge Straight Set



Suction Curette Ridge Curved Set



Leep/Lletz Electrodes

Loop electrodes are made of thin 0.2mm hard tungsten wire with high melting temperature and excellent conductivity of current. To prevent excessive tissue removal, loop electrodes are shallow.

All electrodes are ready to use, sterile, and sealed in their individual procedure blister trays.

SKU	Description	
OB-1512	15mm x 12mm	Loop
OB-1515	15mm x 15mm	Loop
OB-2008	20mm x 8mm	Loop
OB-2010	20mm x 10mm	Loop
OB-2012	20mm x 12mm	Loop
OB-2015	20mm x 15mm	Loop
OB-2020	20mm x 20mm	Loop
OB-2510	25mm x 10mm	Loop
OB-3B	3mm	Ball
OB-5B	5mm	Ball

SKU	Description	
OB-1004S	10mm x 4mm	Square Loop
OB-0505	5mm x 5mm	Loop
OB-0505S	5mm x 5mm	Square Loop
OB-1005	10mm x 5mm	Loop
OB-1007	10mm x 7mm	Loop
OB-1008	10mm x 8mm	Loop
OB-1008S	10mm x 8mm	Square Loop
OB-1010	10mm x 10mm	Loop
OB-1010S	10mm x 10mm	Square Loop
OB-1507	15mm x 7mm	Loop
OB-1510	15mm x 10mm	Loop



Monsel's Solution

Ferric Sub sulfate Solution Box/12 8 ml bottles and 12 rayon tip applicators

SKU: 9045055

BIOPSY PUNCHES



Tischler-Morgan
SKU: BP018 10"
SKU: BP008 8.25"



Baby Tischler
SKU: BP019 10"
SKU: BP009 8.25"



Burke
SKU: BP020 10"
SKU: BP011 8.25"








Tischler-Kevorkian
SKU: BP021 10"
SKU: BP012 8.25"



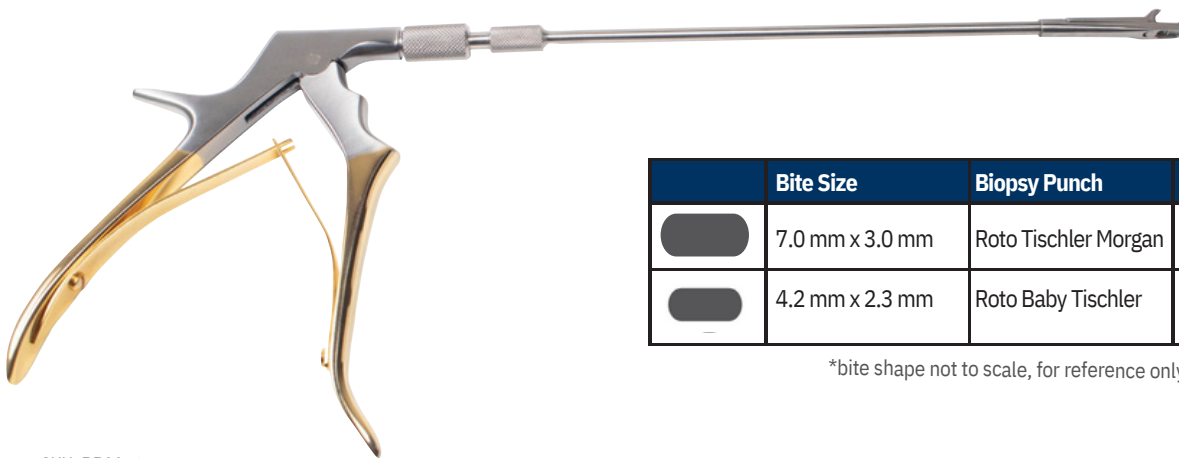
Kevorkian-Pacific
SKU: BP022 10"
SKU: BP013 8.25"

SKU	Description
BP017	Sullivan PCH 8.25" Bite 4.0 x 2.0mm
BP018	Tischler Bite size 7.0 X 3.0mm
BP019	Baby Tischler Bite size 4.2 X 2.3mm
BP020	Oval Burke Bite size 5.5 X 3.25mm
BP021	Tischler-Kevorkian Bite size 9.5 x 3.0mm
BP022	Kevorkian-Pacific Bite size 8.0 X 3.0mm
BP23	Baggish Bite size 6.5 x 4.0 mm
BP103	Rotating Tischler Bite size 7.0 x 3.0 mm
BP104	Rotating Baby Tischler Bite size 4.2 x 2.3mm
BP105	Rotating Oval Bite size 5.0 X 3.0mm
BP109	Rotating Tischler Up Bite size 7.0 X 3.0mm
BP201	Keyes Punch 3mm 3.75

	Bite Size	Biopsy Punch	8.25" SKU	10" SKU
	4.2 mm x 2.3 mm	Baby Tischler	BP009	BP019
	9.5 mm x 3.0 mm	Tischler- Kevorkian	BP012	BP021
	8.0 mm x 3.0 mm	Kevorkian- (Pacific)	BP013	BP022
	7.0 mm x 3.0 mm	Tischler- (Morgan)	BP008	BP018
	5.5 mm x 3.25 mm	Oval- (Burke)	BP011	BP020

*bite shape not to scale, for reference only

8.25" or 10"



SKU: BP114/ SKU: BP 103

	Bite Size	Biopsy Punch	8.25" SKU	10" SKU
	7.0 mm x 3.0 mm	Roto Tischler Morgan	BP114	BP103
	4.2 mm x 2.3 mm	Roto Baby Tischler	BP111	BP104

*bite shape not to scale, for reference only

FORCEPS



Foerster Forcep Straight 9.5" (SKU: FC008)

SKU	Description
FC006	I.U.D. Removal FCP 12"
FC008	Foerster Forcep Straight 9.5"
FC106	Schroeder Tenaculum FCP 9.5"
FC107	Braun Tenaculum FCP 9.5"

STAINLESS STEEL SPECULUMS



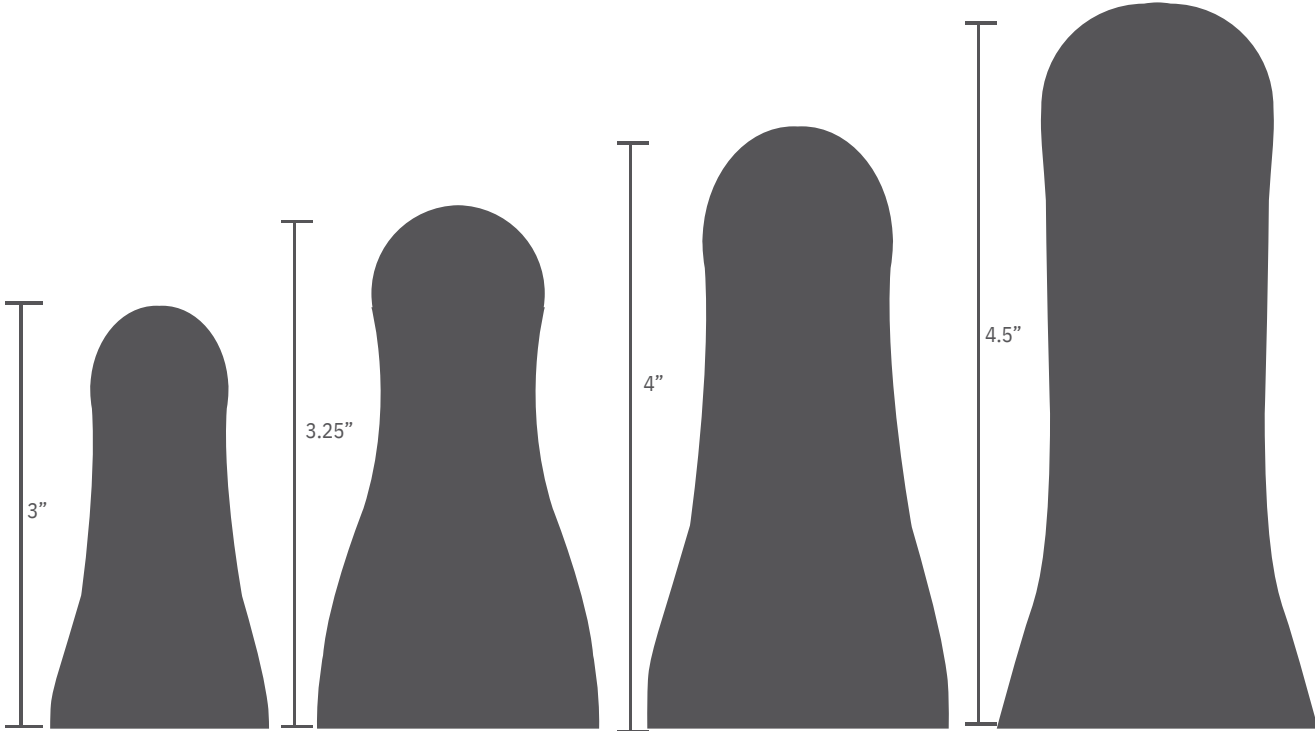
Standard 30mm opening



View-More 40mm opening



View-Maxi 70mm opening



Graves Small
Standard 30mm Opening
SKU: SP001

Moore Graves
Standard 30mm Opening
SKU: SP005

Graves Medium
Standard 30mm Opening
SKU: SP002

Graves Large
Standard 30mm Opening
SKU: SP003

View-More 40mm Opening
SKU: SP215

View-More 40mm Opening
SKU: SP216

View-Maxi 70mm Opening
SKU: SP217

View-Maxi 70mm Opening
SKU: SP218



Weisman-Graves Vaginal Speculum
Medium
R/Open
SKU: SP201



Graves Vaginal Speculum
Large
SKU: SP003



Pederson Vaginal
Speculum Large
SKU: SP105

SKU	Description
SP001	Graves Vag Spec SM 3"
SP002	Graves Vag Spec MD 4"
SP003	Graves Vag Spec LG 4.5"
SP004	Graves Vag Spec XXL 7"
SP005	Moore Graves Spec 3.25"x1.5"
SP006	Graves-Snowman Spec 6"
SP101	Pederson Vag Spec XS 2.25"
SP102	Pederson Vag Spec EX NAR .5"x4"
SP103	Pederson Vag Spec SM 3"

SKU	Description
SP104	Pederson Vag Spec MD 4"
SP105	Pederson Vag Spec LG 4.5"
SP106	Pederson Vag Spec XXL 7"
SP201	Weisman-Graves Spec R MD 4"
SP202	Weisman-Graves Spec R LG
P215	Spec MD 4" View-More Vag
SP217	Spec MD 4" View-Maxi Graves
SP218	Spec LG 4.5" View-Maxi Peds
SP219	Spec MD 4" View-Maxi Peds

LLETZ SPECULUMS & INSTRUMENTS

Autoclavable



Lletz Graves Vaginal Speculum
w/ Evacuation Tube
Large
SKU: LZ003



Lletz Thumb Dress Forcep
8" SKU: LZ101



Lletz Tenaculum Forcep 9.5"
SKU: LZ108

SKU	Description	SKU	Description	SKU	Description
LZ001	Lletz Graves Spec SM E/T 3"	LZ013	Lletz W-Graves MD L E/T 4"	LZ025	Lletz View-More Md E/T 4"
LZ002	Lletz Graves Spec MD E/T 4"	LZ014	Lletz W-Graves LG L E/T 4.75"	LZ026	Lletz View-More LG E/T 4.75"
LZ003	Lletz Graves Spec LG E/T 4.75"	LZ015	Lletz W-Graves 45° R MD E/T 4"	LZ027	Lletz View-Maxi GR MD E/T 4"
LZ004	Lletz Graves Spec XXL E/T 7"	LZ016	Lletz W-Graves 45° R LG E/T 4.75"	LZ028	Lletz View-Maxi GR LG E/T 4.75"
LZ005	Lletz M-Graves Spec E/T 4"	LZ017	Lletz W-Graves R XXL E/T 7"	LZ029	Lletz View-Maxi PD MD E/T 4"
LZ006	Lletz Graves-Snowman E/T 6"	LZ018	Llets W-Peds R MD E/T 4"	LZ034	Llets Ultra-View MD E/T 4"
LZ007	Lletz Peds Spec SM E/T 3"	LZ019	Llets W-Peds R LG E/T 4.75"	LZ041	Lletz Kogan Spec 4-8mm, 11"
LZ008	Lletz Peds Spec MD E/T 4"	LZ020	Lletz W-Peds L MD E/T 4"	LZ101	Lletz Thumb Dress FCP 8"
LZ009	Lletz Peds Spec LG E/T 4.75"	LZ021	Lletz W-Peds L LG E/T 4.75"	LZ108	Lletz Tenaculum FCP 9.5"
LZ010	Lletz Peds Spec XXL E/T 7"	LZ022	Lletz W-Peds 45° R MD E/T 4"	LZ202	Lletz Lateral Retr REG 10"
LZ011	Lletz W-Graves MD R E/T 4"	LZ023	Lletz W-Peds R XL E/T 7"	LZ203	Lletz Lateral Retr V-M 10", 2.5" L
LZ012	Lletz W-Graves LG R E/T 4.75"	LZ024	Lletz View-More SM E/T 3"	LZ205	Lletz R.W. Retr MD BL 7.75"
				LZ206	Lletz R.W. Retr LG BL 7.75"

CURETTES

Sims Uterine Curette



#00 SKU: CT101

#0 SKU: CT102

#1 SKU: CT103

#2 SKU: CT104

#3 SKU: CT105

Novak Endocervical Curette



4mm SKU: CT005

3mm SKU: CT004

2mm SKU: CT003

1mm SKU: CT002



Randall



Novak



Kevorkian

SKU	Description
CT001	Randall Biopsy Cur 4mm, 9.75"
CT002	Novak Biopsy Cur 1mm, 9.75"
CT003	Novak Biopsy Cur 2mm, 9.75"
CT004	Novak Biopsy Cur 3mm, 9.75"
CT005	Novak Biopsy Cur 4mm, 9.75"
CT006	Kevorkian Cur w/o Basket 12"
CT007	Kevorkian Cur w Basket 12"
CT008	Townsend Cur w/o Basket 12"



3-4mm
5-6mm
7-8mm
9-10mm
11-12mm
13-14mm
15-16mm
17-18mm

Hegar Dilator Set
SKU: DL201
(set of 8)



9/10
11/12
13/14
15/16
17/18
19/20

Hank Dilator Set
SKU: DL301
(set of 6)



13/15
17/19
21/23
25/29
33/35
37/39
41/43

Pratt Dilator Set
SKU: DL401
(set of 8)

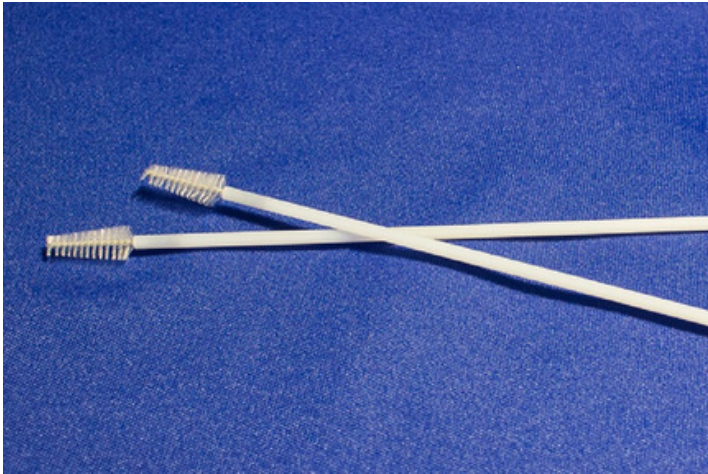
Bioteque America Inc.

SKU	Description
DL003	Mini Dilator Set of 5, 9" w/ handle
DL101	Small Dilator Set 1-6mm, 7.5"
DL201	Hegar Dil DE Set of 8, 7.5"
DL300	Hank Dilator 7/8 FR, 11"
DL301	Hank Dilator Set of 6, 11"
DL302	Hank Dilator 9/10 FR, 11"

SKU	Description
DL303	Hank Dilator 11/12 FR, 11"
DL304	Hank Dilator 13/14 FR, 11"
DL305	Hank Dilator 15/16 FR, 11"
DL306	Hank Dilator 17/18 FR, 11"
DL307	Hank Dilator 19/20 FR, 11"
DL401	Pratt Dilator Set of 8, 11.5"
DL501	Dennison Dilator Set of 5, 5/6mm - 13/14mm, 11.5"

DILATORS

BIOTEQUE CYTOLOGY BRUSH, PESSARY REMOVER, & P.O.P.S RULER



Cytology Brushes

Cytology brushes are used to collect samples from the cervix for PAP smears. The samples are examined to detect the early stages or the onset of cancer.

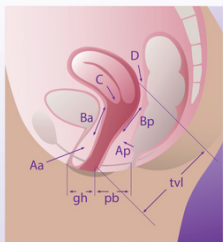
SKU: TEA R1011
100 pcs/ package



Bioteque Pessary Remover

Designed to aid in removal. It is made from medical-grade stainless steel and can be used with the following types of pessaries: Ring, Ring with Knob, Oval, Dish, Hodge, Marland and Gellhorn. Lubricant is required while using the remover. Healthcare provider use only.

SKU: PRM2
Dimensions: 182mm



Point	Description	Range of Values	Stage	Description
Aa (1)	Anterior vaginal wall 3 cm proximal to the hymen	-3 cm to +3 cm	0	Aa, Ap, Ba, Bp = -3 cm and Cor D ≤ -(tvl-2) cm
Ba (2)	Most distal point of the remaining upper anterior vaginal wall	-3 cm to +tvl		
C (3)	Most distal edge of cervix or vaginal cuff scar		1	Stage 0 criteria not met and leading edge < -1
D (4)	Posterior fornix (N/A if post-hysterectomy)			
Ap (5)	Posterior vaginal wall 3 cm proximal to the hymen	-3 cm to +3 cm	2	Leading edge ≥ -1 cm but ≤ +1 cm
Bp (6)	Most distal position of the remaining upper posterior vaginal wall	-3 cm to +tvl		
gh (7)	Hiatus genitalis, measured from middle of external urethral meatus to posterior midline hymen		3	Leading edge > +1 cm but < +(tvl-2) cm
pb (8)	Perineal body, measured from posterior margin of gh to middle of anal opening			
tvl (9)	Total vaginal length (tvl), depth of vagina when point D or C is reduced to normal position		4	Leading edge ≥ +(tvl-2) cm

POP-Q Quick reference guide

The POP-Q assessment tool measures nine points (see left).

There are six points measured at the vagina with respect to the hymen. The prolapsed organs are measured in centimetres to the hymen. The measurements are taken when the Valsalva maneuver is performed by the woman while in the dorsal lithotomy position. Points above the hymen are negative numbers, points below the hymen are positive numbers.

The further three points are the genital hiatus (gh: measured from middle of external urethral meatus to posterior midline hymen), the perineal body (pb: measured from posterior margin of gh to middle of anal opening) and the total vaginal length (tvl).



P.O.P.s Ruler

The clinical tool to identify the severity of pelvic organ prolapses and the anatomical success or failure of prolapse surgery.

SKU: BA222-222

RETURN POLICY

Product(s) may be returned at Bioteque's expense for the following reasons only:

- The received product(s) is defective
- The product(s) is incorrect
- The product(s) was not ordered

Bioteque will credit and accept returns of non-sterile product(s) at a 25% restocking fee only if:

- The product(s) is returned in the ORIGINAL packaging and marketable condition and
- A written reason for the return is provided and
- A copy of Bioteque's packing list or invoice is included

A Return Merchandise Authorization (RMA) number must be obtained from Bioteque by calling (408) 526-9398. The

RMA number must appear on the outside of the package. All returns must be sent to Bioteque America, Inc. 2051 Junction Ave. #128 San Jose, CA 95131

NO RETURNS WILL BE ACCEPTED AFTER 90 DAYS OF RECEIPT. THERE ARE NO REFUNDS OR CREDIT FOR THE RETURN OF STERILE PRODUCTS.

FOR ANY QUESTIONS REGARDING THE RETURN POLICY, CONTACT BIOTEQUE AT 408-526-9398

ORDERING INFORMATION

Distribution Center:

1302 Exchange Drive
Suite #150
Richardson, TX 75081

Remittance To:

Bioteque America Inc.
1302 Exchange Drive
Suite #150
Richardson, TX 75081

Phone Orders To:

800-889-9008
408-526-9398

Email Orders To:

CustomerService@bioteque.com

New Accounts/Questions and Concerns:

Info@bioteque.com

Credit Card Orders:

Visa, Mastercard, AMEX

Bioteque America Inc.

1302 Exchange Drive
Suite #150
Richardson, TX 75081

800-889-9008
www.bioteque.com