



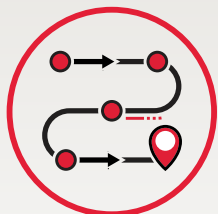
**Cardinal Health™ Jackson-Pratt®**

# Wound drain offerings

Delivering confidence in product performance, with a commitment to patient comfort and safety.



## The name you trust for wound drainage products.



Nearly 50  
years of  
product legacy,  
credibility and  
innovation



A commitment  
to patient safety  
and comfort



A standardized  
portfolio to  
accommodate  
every need

## What's inside

**Introduction** \_\_\_\_\_ 3

**Jackson-Pratt® Perforated Drains** \_\_\_\_\_ 4-5

**Jackson-Pratt® Channel Drains** \_\_\_\_\_ 6-7

**Jackson-Pratt® Hemaduct®  
Wound Drains** \_\_\_\_\_ 8-9

**Cardinal Health™ Penrose Drains** \_\_\_\_\_ 10-11

**Jackson-Pratt® Bulb Reservoirs  
and Accessories** \_\_\_\_\_ 12-13

**Jackson-Pratt® 3-Spring Reservoirs  
and Accessories** \_\_\_\_\_ 14

**Argyle® Saratoga Drains** \_\_\_\_\_ 15





# Cardinal Health™ Jackson-Pratt® Wound Drains

Providing products to help improve patient safety and comfort is at the heart of what we do. For years, our quality, clinically designed Jackson-Pratt® Wound Drains have been supported with best practice guidance to help ensure that clinicians, too, feel comfortable and ultimately more confident in what they do.

Our Jackson-Pratt® Wound Drain line, trusted amongst the clinical community since 1971 and a pillar of our extensive drainage offerings, represents our long-standing experience in the industry. You will find comfort in knowing that we provide a full assortment of wound drains and drainage systems, with an opportunity to standardize, ensuring that your wound drain portfolio will effectively meet the needs of a variety of situations and procedures.

The Cardinal Health Wound Drain team is committed to helping provide solutions for more positive patient outcomes.



# Jackson-Pratt® Perforated Drains

Cardinal Health™ Jackson-Pratt® Perforated Drains are available in a variety of sizes and styles, both with and without trocars. They are often referred to as Jackson-Pratt®, JP Drains or Classic Drains.

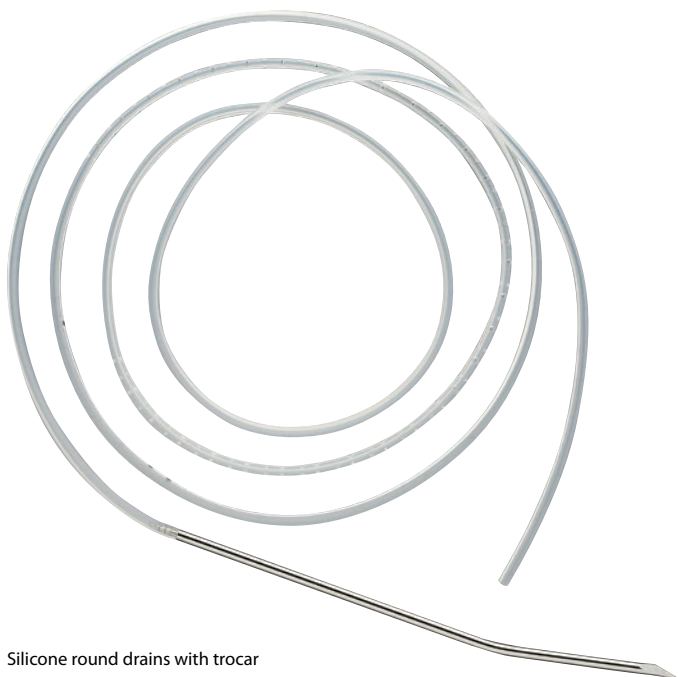
Cardinal Health™ Jackson-Pratt® Perforated Wound Drains were the original flat perforated wound drain in the market.



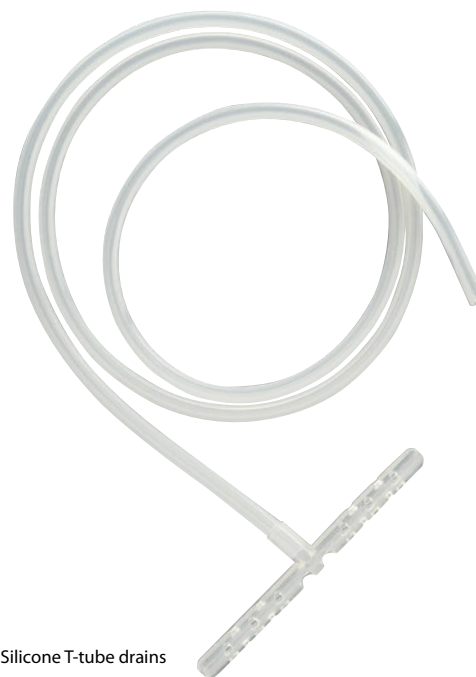
## **Cardinal Health™ Jackson-Pratt® Perforated Drains**

- Injection molded for strength and drain integrity
- Flat drains are a two-piece design
- Flat drain has inner lumen ribbing to help prevent drain collapse and clogging and help preserve drain patency
- Flat drains are silicone that is barium impregnated for X-ray detection of drain
- Round drains are available in both silicone and PVC and feature a radiopaque stripe running the entire length of the drain for X-ray detection
- Perforated round drains are a one-piece design and are hubless
- Silicone T-tube drains are used for hysterectomy and cholecystectomy and is soft and pliable
- Not made with natural rubber latex

# Jackson-Pratt® Perforated Drains



Silicone round drains with trocar



Silicone T-tube drains

Cat. no.	Drain size	Material	Shape	Perforation	Trocar	Qty.
<b>SU130-1308</b>	7 mm x 20 cm	Silicone	Flat	¾	No	10/bx
<b>SU130-1309</b>	10 mm x 20 cm	Silicone	Flat	¾	No	10/bx
<b>SU130-1310</b>	7 mm x 20 cm	Silicone	Flat	Full	No	10/bx
<b>SU130-1311</b>	10 mm x 20 cm	Silicone	Flat	Full	No	10/bx
<b>SU130-1410</b>	7 mm x 20 cm	Silicone	Flat	Full	Yes	10/bx
<b>SU130-1411</b>	10 mm x 20 cm	Silicone	Flat	Full	Yes	10/bx
<b>SU130-1320</b>	7 Fr (¾ in.)	Silicone	Round	End	No	10/bx
<b>SU130-1321</b>	10 Fr (⅜ in.)	Silicone	Round	End	No	10/bx
<b>SU130-1323</b>	15 Fr (⅜ in.)	Silicone	Round	End	No	10/bx
<b>SU130-1325</b>	19 Fr (¼ in.)	Silicone	Round	End	No	10/bx
<b>SU130-1327</b>	19 Fr (¼ in.)	Silicone	Round	Center	No	10/bx
<b>SU130-1328</b>	10 Fr (⅜ in.)	Silicone	Round	Center	No	10/bx
<b>SU130-1329</b>	15 Fr (⅜ in.)	Silicone	Round	Center	No	10/bx
<b>SU130-0320</b>	7 Fr (¾ in.)	Silicone	Round	End	Yes	10/bx
<b>SU130-0321</b>	10 Fr (⅜ in.)	Silicone	Round	End	Yes	10/bx
<b>SU130-0323</b>	15 Fr (⅜ in.)	Silicone	Round	End	Yes	10/bx
<b>SU130-0325</b>	19 Fr (¼ in.)	Silicone	Round	End	Yes	10/bx
<b>SU130-0521</b>	10 Fr (⅜ in.)	PVC	Round	Center	Yes	10/bx
<b>SU130-0523</b>	15 Fr (⅜ in.)	PVC	Round	Center	Yes	10/bx
<b>SU130-0525</b>	19 Fr (¼ in.)	PVC	Round	Center	Yes	10/bx
<b>SU130-1521</b>	10 Fr (⅜ in.)	PVC	Round	Center	No	10/bx
<b>SU130-1525</b>	19 Fr (¼ in.)	PVC	Round	Center	No	10/bx
<b>SU130-1334</b>	19 Fr (¼ in.)	Silicone	T-tube		No	10/bx

# Jackson-Pratt® Channel Drains

Cardinal Health™ Jackson-Pratt® Channel Drains are available in a variety of sizes and styles, both with and without trocars.



## **Cardinal Health™ Jackson-Pratt® Channel Drains**

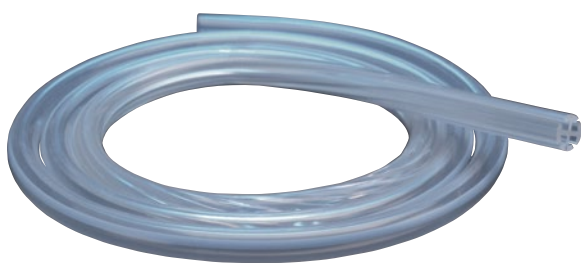
- A four-channel design
- Silicone material helps to improve patient comfort while providing high tensile strength
- Designed to help assist in minimizing tissue in-growth through a no-hole design
- Flat and round drains come in a two-piece design; round drains also come in a one-piece hubless design
- Flat and round two-piece drains include silicone that is barium impregnated for X-ray detection
- Round hubless drains include a radiopaque stripe for X-ray design
- Not made with natural rubber latex



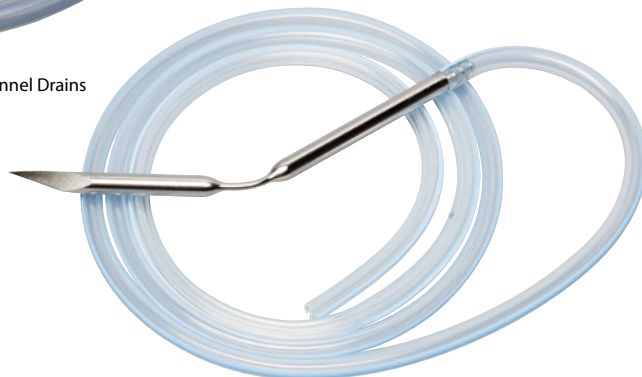
# Jackson-Pratt® Channel Drains



Cardinal Health™ Jackson-Pratt® Flat and Round Channel Drains



Cardinal Health™ Jackson-Pratt® Hubless Channel Drains



Cardinal Health™ Jackson-Pratt® Channel Drains with Bendable Trocar

Cat. no.	Drain size	Material	Shape	Channel	Trocar	Qty.
JP-2210	7 mm x 30 cm	Silicone	Flat	¾ (20 cm)	No	10/bx
JP-2211	7 mm x 20 cm	Silicone	Flat	Full (20 cm)	No	10/bx
JP-2213	10 mm x 30 cm	Silicone	Flat	¾ (20 cm)	No	10/bx
JP-2214	10 mm x 20 cm	Silicone	Flat	Full (20 cm)	No	10/bx
JP-2216	7 mm x 30 cm	Silicone	Flat	¾ (20 cm)	15 Fr x 6 in.	10/bx
JP-2212	7 mm x 20 cm	Silicone	Flat	Full (20 cm)	15 Fr x 6 in.	10/bx
JP-2217	10 mm x 30 cm	Silicone	Flat	¾ (20 cm)	15 Fr x 6 in.	10/bx
JP-2215	10 mm x 20 cm	Silicone	Flat	Full (20 cm)	15 Fr x 6 in.	10/bx
JP-2221	10 Fr, 30 cm	Silicone	Round	¾ (20 cm)	10 Fr x 6 in.	10/bx
JP-2223	15 Fr, 30 cm	Silicone	Round	¾ (20 cm)	15 Fr x 6 in.	10/bx
JP-2225	19 Fr, 30 cm	Silicone	Round	¾ (20 cm)	15 Fr x 6 in.	10/bx
JP-2186	10 Fr, 20 cm	Silicone	Round	Full (20 cm)	No	10/bx
JP-2188	15 Fr, 30 cm	Silicone	Round	Full (30 cm)	No	10/bx
JP-2190	19 Fr, 30 cm	Silicone	Round	Full (30 cm)	No	10/bx
JP-2187	10 Fr, 20 cm	Silicone	Round	Full (20 cm)	10 Fr x 6 in.	10/bx
JP-2189	15 Fr, 30 cm	Silicone	Round	Full (30 cm)	15 Fr x 6 in.	10/bx
JP-2191	19 Fr, 30 cm	Silicone	Round	Full (30 cm)	15 Fr x 6 in.	10/bx
<b>Hubless silicone channel drains</b>						
JP-2227	10 Fr	Silicone	Round	30 cm	10 Fr x 6 in.	10/bx
JP-2229	15 Fr	Silicone	Round	30 cm	15 Fr x 6 in.	10/bx
JP-2231	19 Fr	Silicone	Round	30 cm	19 Fr x 6 in.	10/bx
JP-2226	10 Fr	Silicone	Round	30 cm	No	10/bx
JP-2228	15 Fr	Silicone	Round	30 cm	No	10/bx
JP-2230	19 Fr	Silicone	Round	30 cm	No	10/bx
JP-2232	19 Fr	Silicone	Round	30 cm	Bendable - 19 Fr x 6 in.	10/bx
JP-2233	15 Fr	Silicone	Round	30 cm	Bendable - 15 Fr x 6 in.	10/bx
JP-2234	24 Fr	Silicone	Round	30 cm channel, 43 in. total length	No	10/bx
JP-2290	28 Fr	Silicone	Round	30 cm channel, 43 in. total length	No	10/bx
JP-2292	32 Fr	Silicone	Round	30 cm channel, 43 in. total length	No	10/bx

# Jackson-Pratt® Hemaduct® Wound Drains

Jackson-Pratt® Hemaduct® Wound Drains allow multiple fluid pathways should soft tissue obstructions restrict continuous fluid flow throughout the drain.



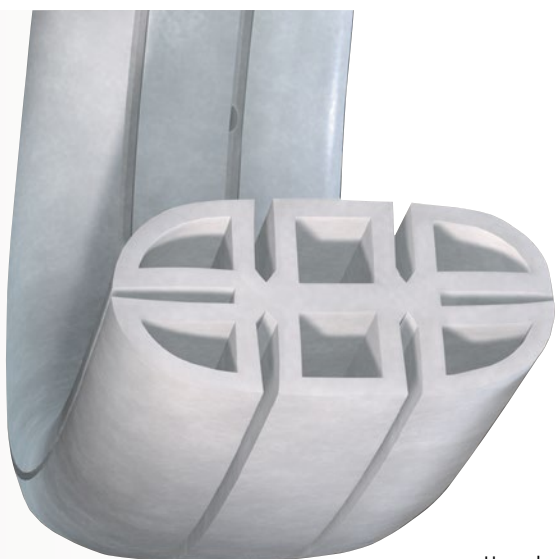
Hemaduct® Round Drains

## Cardinal Health™ Jackson-Pratt® Hemaduct® Drains

- **Internal portal** – Internal portals interconnect open and closed channels to allow fluid to change channels and circumvent obstructions
- **Open channels** – Open channels span the length of the drain to maximize fluid collection potential
- **Closed channels** – Closed channels minimize the risk of tissue ingrowth while providing an alternative pathway for fluid
- **Silicone advantage** – Silicone material provides strength and softness
- **Cardiothoracic** – For procedures such as on-pump or off-pump coronary artery bypass graft, valve replacement or repair, thoracotomy and lobectomy



# Jackson-Pratt® Hemaduct Wound Drains



Hemaduct® Flat Drains

## Jackson-Pratt® Hemaduct® Drains

Cat.no	Drain size	Shape	Ducts	Trocar	Qty.
JP-HUF070	7 mm x 20 cm	Flat	Full (20 cm)	No	10/bx
JP-HUF200	10 mm x 20 cm	Flat	Full (20 cm)	No	10/bx
JP-HUF071	7 mm x 20 cm	Flat	Full (20 cm)	15 Fr x 15 cm	10/bx
JP-HUF104	10 mm x 20 cm	Flat	$\frac{3}{4}$ (15 cm)	15 Fr x 15 cm	10/bx
JP-HUF101	10 mm x 20 cm	Flat	Full (20 cm)	15 Fr x 15 cm	10/bx
JP-HUR100	10 Fr ( $\frac{1}{8}$ in.) x 40 cm	Round	30 cm	No	10/bx
JP-HUR150	15 Fr ( $\frac{3}{16}$ in.) x 40 cm	Round	30 cm	No	10/bx
JP-HUR190	19 Fr ( $\frac{1}{4}$ in.) x 40 cm	Round	30 cm	No	10/bx
JP-HUR101	10 Fr ( $\frac{1}{8}$ in.) x 40 cm	Round	30 cm	10 Fr x 15 cm	10/bx
JP-HUR151	15 Fr ( $\frac{3}{16}$ in.) x 40 cm	Round	30 cm	15 Fr x 15 cm	10/bx
JP-HUR195	19 Fr ( $\frac{1}{4}$ in.) x 40 cm	Round	30 cm	15 Fr x 15 cm	10/bx
JP-HUR860	10 Fr ( $\frac{1}{8}$ in.) x 30 cm	Round	30 cm	No	10/bx
JP-HUR880	15 Fr ( $\frac{3}{16}$ in.) x 30 cm	Round	30 cm	No	10/bx
JP-HUR900	19 Fr ( $\frac{1}{4}$ in.) x 30 cm	Round	30 cm	No	10/bx
JP-HUR870	10 Fr ( $\frac{1}{8}$ in.) x 30 cm	Round	30 cm	10 Fr x 15 cm	10/bx
JP-HUR890	15 Fr ( $\frac{3}{16}$ in.) x 30 cm	Round	30 cm	15 Fr x 15 cm	10/bx
JP-HUR910	19 Fr ( $\frac{1}{4}$ in.) x 30 cm	Round	30 cm	15 Fr x 15 cm	10/bx

## Jackson-Pratt® Hemaduct® Cardiothoracic Drains

Cat. no.	Description	Qty.
CT-HU1900	Hemaduct® Cardiothoracic Drain, 19 Fr	10/bx
CT-HU1910	Hemaduct® Cardiothoracic Drain with Trocar, 19 Fr	10/bx

# Cardinal Health™ Penrose Drains

These drains consist of a flexible rubber tube which is left inside the site of the surgery to promote drainage of blood, lymph and other fluids by gravity.

## **Cardinal Health™ Penrose Drains**

- Consist of a flexible rubber tube which is left inside the site of surgery to help promote drainage of blood, lymph and other fluids to help reduce the risk of infection
- Uses gravity to draw fluids out along its surfaces into dressings
- Sterile
- Radiopaque
- Latex in construction



# Cardinal Health™ Penrose Drains

## Cardinal Health™ Penrose Drains

Cat. no.	Description	Material	Qty.
30414-025	Penrose drain, 12 in. X ¼ in.	Latex radiopaque sterile	10/bx
30414-038	Penrose drain, 12 in. X ⅜ in.	Latex radiopaque sterile	10/bx
30414-050	Penrose drain, 12 in. X ½ in.	Latex radiopaque sterile	10/bx
30414-058	Penrose drain, 12 in. X ⅝ in.	Latex radiopaque sterile	10/bx
30414-075	Penrose drain, 12 in. X ¾ in.	Latex radiopaque sterile	10/bx
30414-100	Penrose drain, 12 in. X 1 in.	Latex radiopaque sterile	10/bx
30416-025	Penrose drain, 18 in. X ¼ in.	Latex radiopaque sterile	10/bx
30416-038	Penrose drain, 18 in. X ⅜ in.	Latex radiopaque sterile	10/bx
30416-050	Penrose drain, 18 in. X ½ in.	Latex radiopaque sterile	10/bx
30416-058	Penrose drain, 18 in. X ⅝ in.	Latex radiopaque sterile	10/bx
30416-075	Penrose drain, 18 in. X ¾ in.	Latex radiopaque sterile	10/bx
30416-078	Penrose drain, 18 in. X 7⁄8 in.	Latex radiopaque sterile	10/bx
30416-100	Penrose drain, 18 in. X 1 in.	Latex radiopaque sterile	10/bx
30418-050	Penrose drain, 36 in. X ½ in.	Latex radiopaque sterile	30/cs
30418-075	Penrose drain, 36 in. X ¾ in.	Latex radiopaque sterile	30/cs
30418-100	Penrose drain, 36 in. X 1 in.	Latex radiopaque sterile	30/cs

# Jackson-Pratt® Bulb Reservoirs and Accessories

Jackson-Pratt® 100 cc and 400 cc Reservoirs are available separately for use with all Jackson-Pratt® Wound Drains or in convenient kits.

Jackson-Pratt® 100cc and 400cc Bulb Reservoirs with Exudate Disposal Bag



## Cardinal Health™ Jackson-Pratt® Bulb Reservoirs and Accessories

- Silicone walls to provide easy activation of suction
- Internal anti-reflux valve to help prevent backflow of fluid
- Clear reservoir and graduations that make it easy to identify and measure exudate
- Both Jackson-Pratt® 100 cc and 400 cc Reservoirs available separately for use with all Jackson-Pratt® Wound Drains, or in convenient kits packaged with Jackson-Pratt® Flat or Round Wound Drains
- Not made with natural rubber latex



# Jackson-Pratt® Bulb Reservoirs and Accessories



Jackson-Pratt® 100 cc Reservoir Kit with Flat Silicone Drain with Trocar



Jackson-Pratt® Bifurcated Drain Extension, Drain to non-Jackson-Pratt® Reservoir Connector and Wall Suction Connector with Tubing to connect to 100cc Reservoir

## Jackson-Pratt® Bulb Reservoirs

Cat. no.	Reservoir description	Shape	Perforation	Material	Trocar	Qty.
<b>SU130-1305</b>	100 cc reservoir only			Silicone	No	10/cs
<b>SU1301305D</b>	100 cc reservoir only, double wrap			Silicone		30/cs
<b>SU130-1348</b>	100 cc, 7 mm x 20 cm	Flat	¾	Silicone	No	10/cs
<b>SU130-1349</b>	100 cc, 10 mm x 20 cm	Flat	¾	Silicone	No	10/cs
<b>SU130-1360</b>	100 cc, 7 mm x 20 cm	Flat	Full	Silicone	No	10/cs
<b>SU130-1361</b>	100 cc, 10 mm x 20 cm	Flat	Full	Silicone	No	10/cs
<b>SU130-1358</b>	100 cc, 7 mm x 20 cm	Flat	¾	Silicone	Yes	10/cs
<b>SU130-1359</b>	100 cc, 10 mm x 20 cm	Flat	¾	Silicone	Yes	10/cs
<b>SU130-1370</b>	100 cc, 7 mm x 20 cm	Flat	Full	Silicone	Yes	10/cs
<b>SU130-1371</b>	100 cc, 10 mm x 20 cm	Flat	Full	Silicone	Yes	10/cs
<b>SU130-1000</b>	400 cc reservoir only			Silicone	No	10/cs
<b>SU1301000D</b>	400 cc reservoir only, double wrap			Silicone		10/cs
<b>SU130-1080</b>	400 cc, 10 Fr x ½ in.	Round	Center	Silicone	Yes	10/cs
<b>SU130-1060</b>	400 cc, 15 Fr x ¾ in.	Round	End	Silicone	Yes	10/cs
<b>SU130-1010</b>	400 cc, 19 Fr x ¼ in.	Round	End	Silicone	Yes	10/cs

## Jackson-Pratt® Accessories

Cat. No.	Description	Size	Material	Qty.
<b>SU130-1315</b>	Bifurcated drain extension	5 mm O.D.	Silicone	80/cs
<b>SU130-1340</b>	Connector to non Jackson-Pratt® reservoir	3 mm to 6 mm	Silicone	80/cs
<b>SU130-1342</b>	Jackson-Pratt® Wall Suction Adapter	3 mm to 10 mm	Silicone	80/cs
<b>SU130-5005</b>	Exudate bag bulb reservoir, 800 cc. Connects to 100 cc bulb reservoir		Silicone	100/cs
<b>SU130-6005</b>	Exudate bag bulb reservoir, 800 cc. Connects to 400 cc bulb reservoir		Silicone	100/cs

# Cardinal Health™ Jackson-Pratt® 3-Spring Reservoirs and Accessories

Cardinal Health™ Jackson-Pratt® 3-Spring Reservoirs are available in convenient kits with PVC Drains or separately with silicone adapters for connection to any of the Jackson-Pratt® Silicone Drains.



## Cardinal Health™ Jackson-Pratt® 3-Spring Reservoir Kits

- Available in convenient kits with PVC drains or separately with silicone adapters for connection to any of the Jackson-Pratt® Silicone Drains
- 3-spring design to provide easy activation of suction
- Anti-reflux valve to aid in preventing backflow of fluid to the patient
- Transparent sidewall with clearly marked graduations for quick and easy identification and measurement of exudate
- PVC wound drain includes a radiopaque stripe for X-ray detection
- Universal wound drain y-connector which can be cut to accept  $\frac{3}{32}$  in.,  $\frac{1}{8}$  in., or  $\frac{1}{4}$  in. diameter wound drains
- All kits include a round, center perforated, hubless PVC drain with a trocar
- Not made with natural rubber latex

## Jackson-Pratt® 3-Spring Reservoirs

Cat. No.	Description	Material	Qty.
<b>SU130-401D</b>	7 Fr ( $\frac{3}{32}$ in.)	PVC	12/cs
<b>SU130-402D</b>	10 Fr ( $\frac{1}{8}$ in.)	PVC	12/cs
<b>SU130-403D</b>	15 Fr ( $\frac{3}{16}$ in.)	PVC	12/cs
<b>SU130-404D</b>	19 Fr ( $\frac{1}{4}$ in.)	PVC	12/cs
<b>SU130-475</b>	Reservoir kit with silicone adapters		12/cs

## Jackson-Pratt® 3-Spring Accessories

Cat. No.	Description	Material	Qty.
<b>SU130-4601</b>	Universal connector, may be cut in to accept $\frac{3}{32}$ in., $\frac{1}{8}$ in., $\frac{3}{16}$ in. or $\frac{1}{4}$ in.	PVC	6/cs

# Argyle® Saratoga Drains

Allows visualization of contents, for placement verification by X-ray, for air passage during drainage and adequate pressure relief and provides customized connections.



## Argyle® Saratoga Sump Drains

- Clear thermosensitive catheter
- Two sump vent
- Beveled connector end can be cropped to form integral funnel connector
- Distal tip eye distribution
- Sterile

Cat. No.	Description	Qty.
<b>8888531012-</b>	Argyle® Saratoga Sump Drain, diameter 16 Fr/Ch. Length 51 cm	10/cs
<b>8888531020</b>	Argyle® Saratoga Sump Drain, 20 Fr/Ch (6.7 mm x 51 cm)	10/cs
<b>8888531038</b>	Argyle® Saratoga Sump Drain, 24 Fr/Ch (8.0 mm x 51 cm)	10/cs
<b>8888531046</b>	Argyle® Saratoga Sump Drain, 28 Fr/Ch (9.3 mm x 51 cm)	10/cs
<b>8888531053-</b>	Argyle® Saratoga Sump Drain, 34 Fr/Ch (9.3 mm x 51 cm)	10/cs
<b>8888531061-</b>	Argyle® Saratoga Sump Drain, 40 Fr/Ch (9.3 mm x 51 cm)	10/cs



## Cardinal Health™ Jackson-Pratt® Wound Drains

Delivering confidence in product performance — allowing you to focus on what matters most — providing the best care possible to your patients.

For more information or to order, Contact your Cardinal Health sales representative. Call **877.CARDINAL (227.3462)** or visit **[cardinalhealth.com/wound-drains](https://cardinalhealth.com/wound-drains)**



**[cardinalhealth.com/wound-drains](https://cardinalhealth.com/wound-drains)**

© 2021 Cardinal Health. All Rights Reserved. CARDINAL HEALTH, the CARDINAL HEALTH LOGO, ESSENTIAL TO CARE, JACKSON-PRATT, HEMADUCT and ARGYLE are trademarks of Cardinal Health and may be registered in the US and/or in other countries. Patent [cardinalhealth.com/patents](https://cardinalhealth.com/patents). Lit. no. 20R21-1478309 (06/2021)

Cardinal Health  
7000 Cardinal Place  
Dublin, Ohio 43017