

Quick Start Placemat

Please read ALL instructions carefully before using this placemat.

LIT 002051 Rev. 0 02/22

A1CNow® Self Check

Match Lot Numbers



Make sure lot numbers on analyzer and pouches match before opening.



If lot numbers do NOT match call Customer Service at 1-877-870-5610.

5 Mix



Shake vigorously 6-8 times (about 5 seconds). This will mix the blood with the solution.



Stand shaker on table while preparing cartridge.

6 Open Foil Cartridge Pouch



After blood collection, tear foil pouch to open at the notches on the sides.



Insert cartridge into analyzer immediately and use within 2 minutes.

1 Open Plastic Shaker Pouch

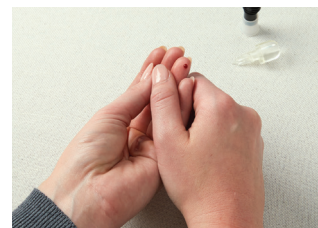


Do NOT open foil pouch until Step 6.

2 Stick Finger



Wash hands or clean with alcohol and dry before testing.



Gently squeeze finger to get adequate blood.

Remove cap and press lancet into finger.

7 Insert Cartridge



"Click" test cartridge into place.



Analyzer and test cartridge codes must match.

8 Prepare Shaker



Remove shaker base.



WAIT for SMPL to display



Ready for shaker

3 Collect Blood



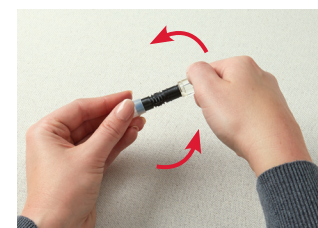
Gently touch blood collector to top of blood drop to fill.

Make sure blood collector is adequately filled.

4 Insert Blood Collector



Fully insert blood collector into shaker body.



Push hard while twisting to fully insert.

9 Dispense Sample into Cartridge



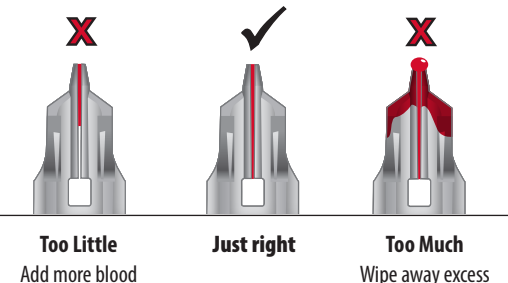
- Ensure analyzer is on level surface.
- Push down completely to dispense diluted sample and remove in a continuous motion.
- Remove shaker from cartridge quickly.
- "RUN" will appear.



Do not handle analyzer again until test is complete!

10 5 Minutes to Results

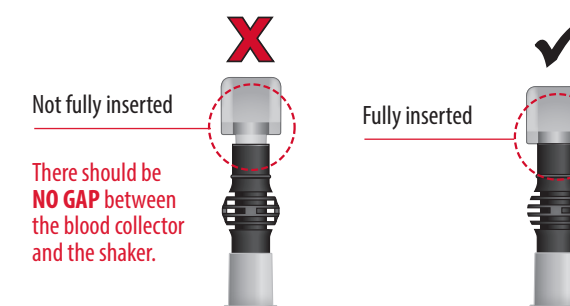
- Analyzer will cycle "QCOK," your result, and # of tests left for 15 minutes and will turn off automatically.
- If "QCOK" is not displayed, refer to the troubleshooting section in the Overview & Quick Reference Guide.
- Record your result.
- If the analyzer displays "01TL," save for next test.
- If analyzer displays "00TL," you used the last test.
- Dispose of cartridge in your household waste.



Too Little
Add more blood

Just right

Too Much
Wipe away excess



Not fully inserted

There should be NO GAP between the blood collector and the shaker.

Fully inserted



Testing in progress



Display counts down



Customer Service 1-877-870-5610.