



# AimStrip® Plus

## BLOOD GLUCOSE TESTING

Tracking your blood glucose concentration through frequent testing is an important part of proper diabetes care.

**The Easy and accurate choice.**

*Accurate & Affordable Results !!*

FOR SELF-TESTING AND PROFESSIONAL USE



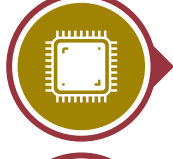
### LOOK AT THESE GREAT FEATURES!



Reliable, Accurate Results in 10 Seconds



Only 1µL Blood Sample Required from Fingertip or Forearm Testing



Single Code Chip for the Life of the Meter



Memory Allows up to 300 Records with Date and Time



English & Español Instructions

CPT Code# 82947QW

**THE TESTS YOU WANT.  
THE ACCURACY YOU NEED!**

**DISTRIBUTED BY:**



**AimStrip® Plus, Blood Glucose Meter Kit** REF# 37321

- ⇒ 1 Blood Glucose Meter
- ⇒ 1 Clear Cap for testing Forearm & Palm
- ⇒ 10 Sterile Lancets
- ⇒ 1 Carrying Case
- ⇒ 1 Logbook
- ⇒ 1 Quick Reference Guide
- ⇒ 1 Lancing Device
- ⇒ 1 User's Manual
- ⇒ 1 Warranty Card

**AimStrip® Plus, Starter Pack** 37355

- ⇒ 1 AimStrip® Plus, Meter Kit
- ⇒ 1 AimStrip® Plus, Strips

**AimStrip® Plus, Blood Glucose Strips** 37350

- ⇒ 50 Test Strips

**AimStrip® Plus Lancets** 37311

- ⇒ 100 Sterile Lancets

**AimStrip® Plus, Glucose Control Solution** 37312

- ⇒ 1 Control Solution #1 - 2mL
- ⇒ 1 Control Solution #2 - 2mL



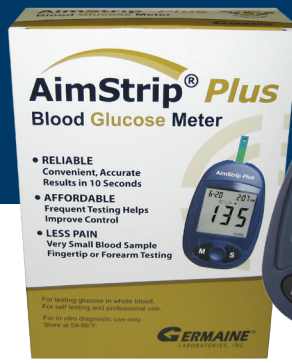
[www.germainelabs.com](http://www.germainelabs.com)



800.854.8446  
210.692.4192  
210.692.4198 Fax

# AimStrip® Plus

## BLOOD GLUCOSE TESTING



An extensive clinical with 167 participants proved the accuracy of the AimStrip® Plus Blood Glucose Monitoring System.

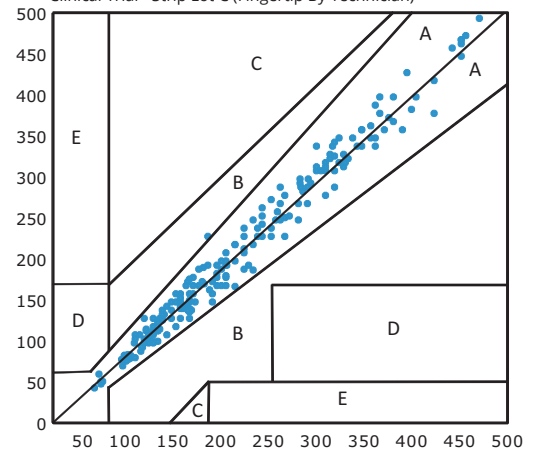
**The Easy and accurate choice.**

Studies have proven that people with diabetes can significantly reduce their risk of complications if they keep their blood glucose as close as possible to normal. Unfortunately, the high costs of current self-monitoring of blood glucose products make the proven benefits of frequent monitoring out the reach for many diabetics.

	AimStrip® Plus	Accu-Chek Advantage	Accu-Chek Active	OneTouch Ultra	OneTouch Horizon	Optium Horizon
Biosensor technology?	✓	✓	optical	✓	✓	✓
Fast results?	✓ 10 sec.	✗ 40 sec.	✓ 5 sec.	✓ 5 sec.	✓ 5 sec.	✓ 10 sec.
1uL sample size?	✓	4µL	2µL	✓	1.5µL	1.5µL
Forearm testing?	✓	✗	✓	✓	✗	✓
Large memory?	✓ 300	✓ 480	✓ 200	✗ 150	✗ last test	✓ 450
Simple calibration?	✓ code chip	✓ code chip	✓ code chip	✗ manual	✗ manual	✓ code chip
Wide measurement range?	✓ 20-600mg/dL	✓ 10-600mg/dL	✓ 10-600mg/dL	✓ 20-600mg/dL	✓ 20-600mg/dL	✗ 20-500mg/dL
Wide operating temperature range?	✓ 5 - 45°C	✗ 14 - 40°C	✗ 10 - 40°C	✓ 6 - 44°C	✓ 12 - 42°C	✗ 15 - 40°C

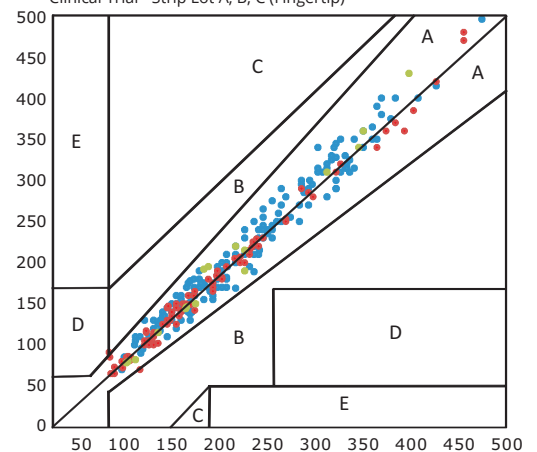
### Accurate Fingertip Testing

Error Grid Analysis  
Clinical Trial - Strip Lot C (Fingertip By Technician)



### Patients can Perform a test as well as a trained technician

Error Grid Analysis  
Clinical Trial - Strip Lot A, B, C (Fingertip)



**THE TESTS YOU WANT. THE ACCURACY YOU NEED!**



[www.germainelabs.com](http://www.germainelabs.com)

